

Product Specifications

Product Name :

CPI-268456

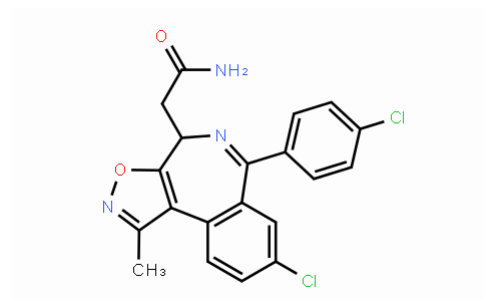
Product Number : MC445451

CAS Number : 1380087-86-4

Formula : C₂₀H₁₅Cl₂N₃O₂

Molecular Weight : 400.26

Structure:



Test	Specification
Purity	NLT 98%

*The current Specification sheet may be available at www.molcore.com.

For further inquiries, please contact sales@molcore.com.